

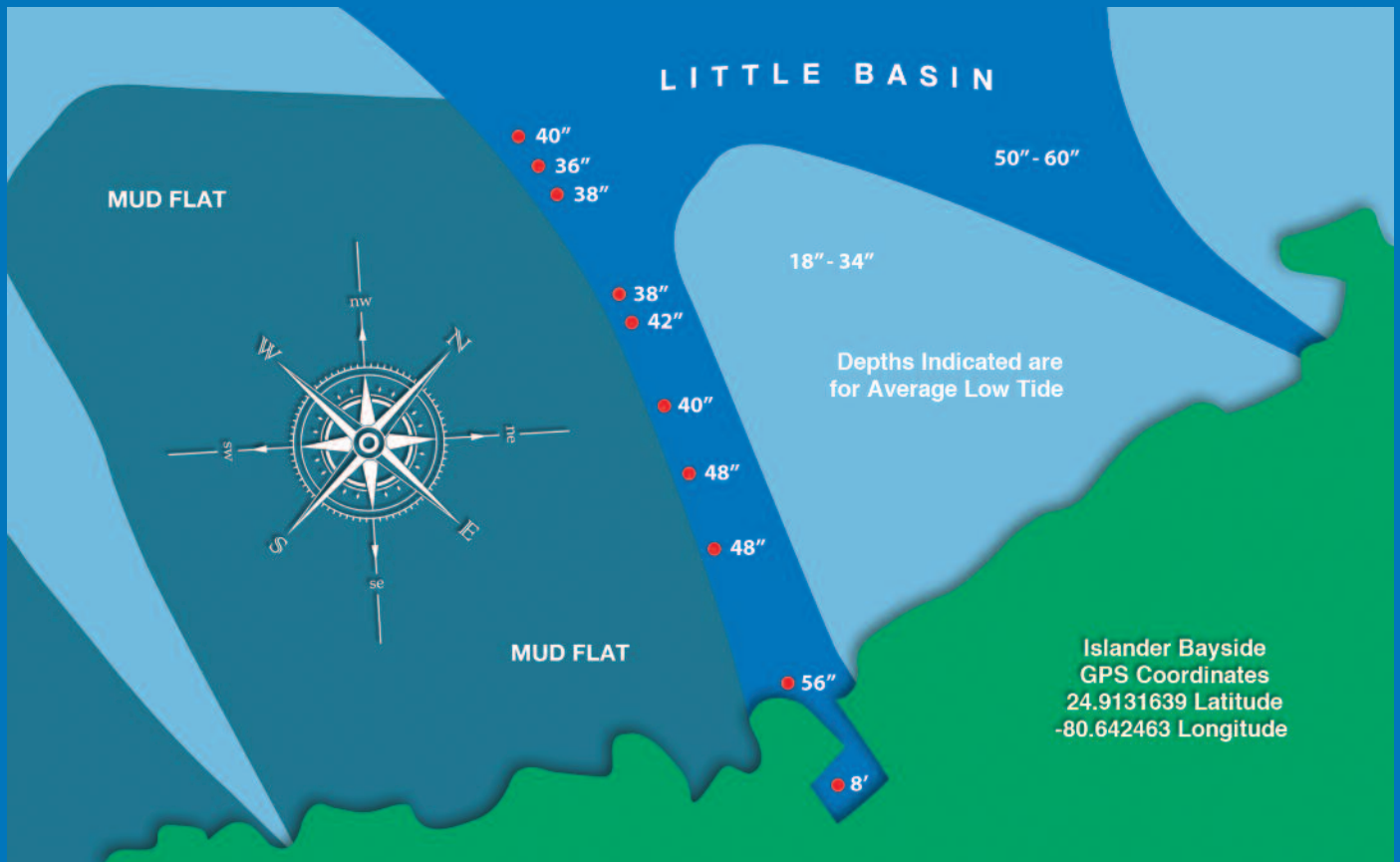
## What All Boaters Need To Know About Florida Keys Waters\*

Monroe County ranks number one in damage to sea grass habitats in the State of Florida. Propeller damage in the Florida Marine Sanctuary poses a severe threat to wildlife and to personal property, and can lead to very hefty fines which most insurance companies will not cover. Always stay close to channel markers and do not operate your vessel in less than two feet of water. Be mindful of tide charts as low tide can sneak up on you and leave you grounded. If you see mud and sediment trailing behind your boat, stop immediately and tilt your motor up.



## Islander Bayside Channel

The narrow channel leading from the boat basin is marked with many channel markers. It is important that you stay close to these markers to prevent propeller damage to sensitive sea grasses and to avoid getting stuck on a mud flat. While fishing on the flats trim motor up and use pole. If you see mud trailing behind you, immediately cut your motor and tilt it up.



## Islander Bayside Boat Basin

Our 14 slips are perfect for boats 24 feet long or less. Slips are available for the nominal fee of \$75 per night, discounts may apply for longer stays. Boat slips must be reserved in advance, please reserve your slip at the same time you reserve your townhouse. Unfortunately, we do not have trailer parking on property. Please click on Boat Launch Info below for additional information about area launch facilities and storage for your trailer. The cost for docking, launching, storage and availability does change seasonally so please inquire when making your reservation.



\*Graphic representations are for informational purposes only and are not intended to be used for navigation.